



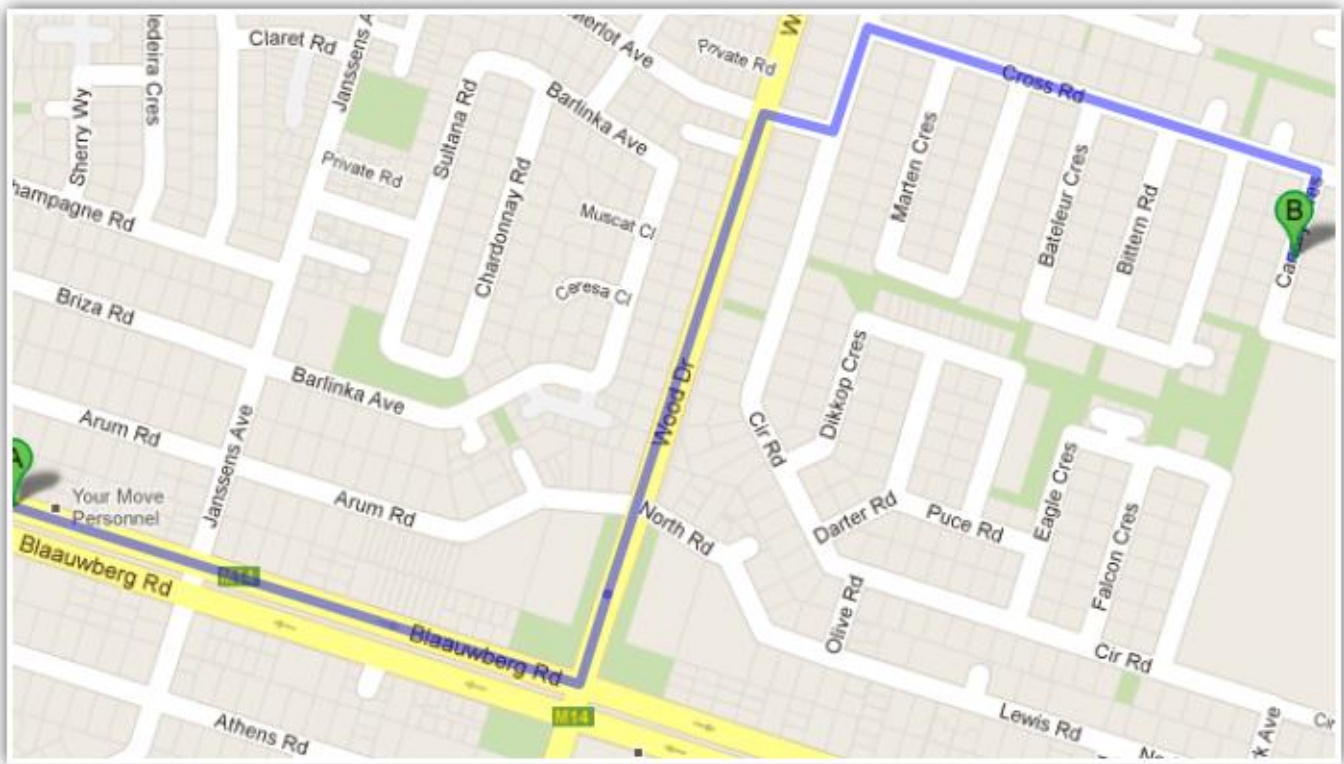
Faces 4 Film

Tel: +27 021 557 2808 | Cell: +27 084 557 2308 | Fax: +27 021 557 2397 | Email: info@faces4film.com | Web: www.faces4film.com

Featured, Background and Performing Artistes for Movies, Stills and Commercials

Once you have an appointment, you can find us at:
7 Canary Crescent
Table View
7441

DIRECTIONS COMING FROM BAYSIDE MALL:



Coming down from Bay Side Mall take a left turn at the robot at Assembly of God Church (**Wood Drive**)

At the second stop street take a right turn

At the stop street take a left into **Circle Road**

At the stop street in take a right into **Cross Rd.**

Go straight and turn right into **Canary Crescent**. Number 7 will be on your right.

Physical: 7 Canary Crescent, Table View, 7441 | Postal: Suite 118, Private Bag X3, Bloubergrant, 7441

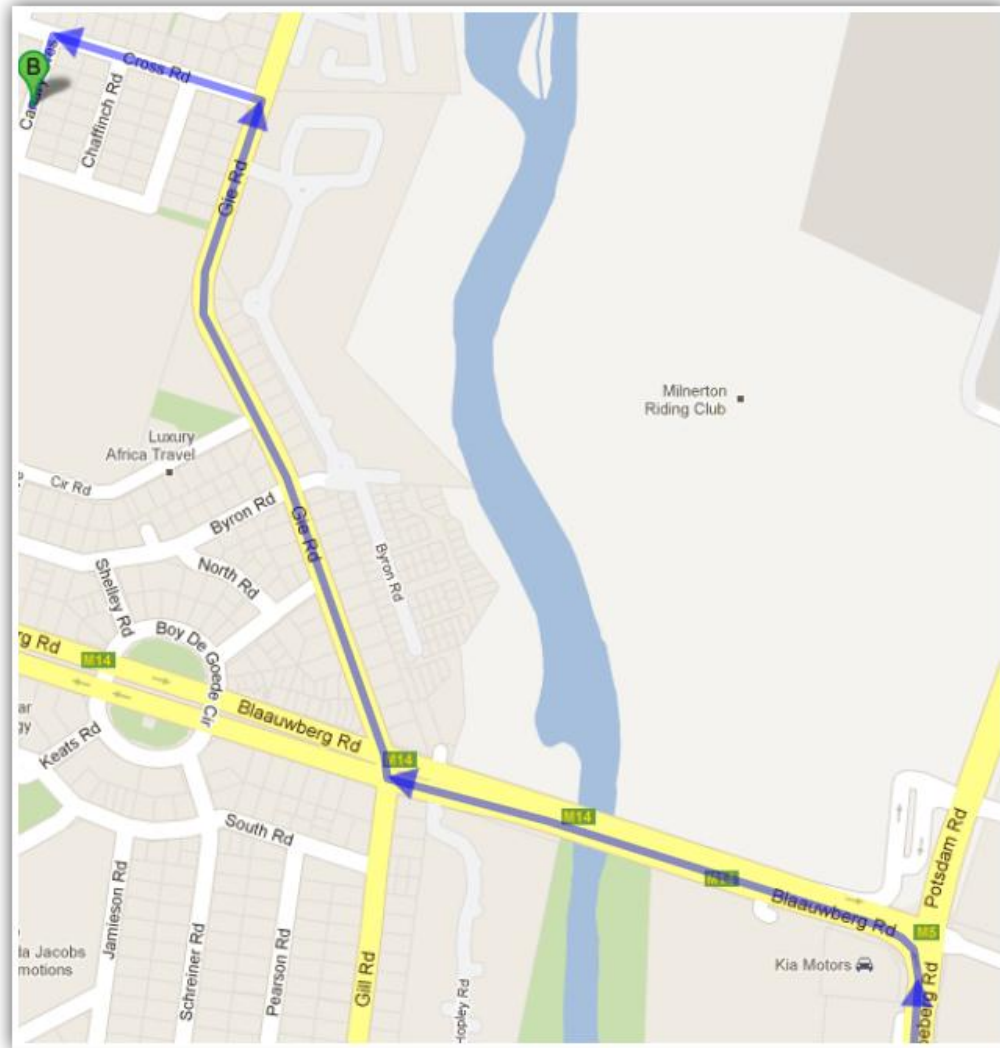


Faces 4 Film

Tel: +27 021 557 2808 | Cell: +27 084 557 2308 | Fax: +27 021 557 2397 | Email: info@faces4film.com | Web: www.faces4film.com

Featured, Background and Performing Artistes for Movies, Stills and Commercials

DIRECTIONS COMING DOWN KOEBERG RD



Coming from **Koeberg Rd**, turn left into **Blaauberg Road**,
At the first robot after the bridge, take a right turn into **Gie Road**.
When in **Gie Road**, take a left at the second stop into **Cross Road**.
At the second stop on **Cross Road** turn left into **Canary Crescent**. #7 will be on your right.

Please note that at all times, we work by appointment only

Physical: 7 Canary Crescent, Table View, 7441 | Postal: Suite 118, Private Bag X3, Bloubaerg, 7441